

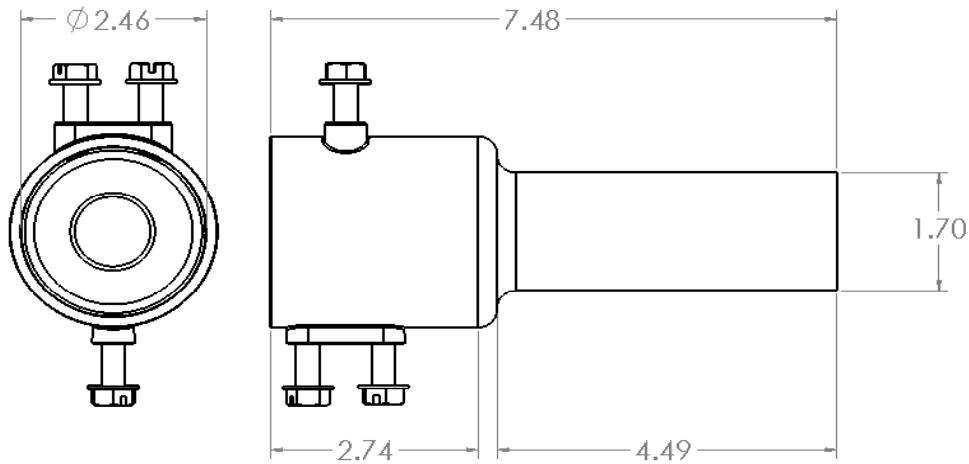
### Mounting Arm Adaptor



<b>Application:</b>	For use with select HI utility grade luminaires.
<b>Features:</b>	<ul style="list-style-type: none"> <li>Couples 2" mounting arm to fit 1-1/2" fitters.</li> <li>Suitable for use with UNH or USC series fixtures.</li> <li>Cast aluminum adaptor.</li> <li>5/16" 4-bolt mounting (tighten to 10-15 ft-lbs).</li> <li>Approximate weight - 1 lb.</li> </ul>

Catalog #	Description
USC-2AA	Adaptor arm for reducing 2-inch mounting arms to fit 1-1/2" fitters.

*Specifications subject to change without notice.*



*Dimensions shown in inches.*