

**LED Flood Light**  
XFLE Series

Project:	
Catalog#:	
Approved by:	

**Features**

- LED: Lumileds
- Color Rendering Index (CRI): > 70
- Long LED life; L<sub>70</sub> > 150,000 hours. L<sub>70</sub> hours are IES TM-21-11 calculated hours.
- Rated for Ambient Temperatures between -40°C/-40°F to 40°C/104°F
- Power Factor (PF) > 0.9
- Total Harmonic Distribution (THD) < 20%
- Surge protection: 6kV
- Fixtures include approx. 1 m (3.3 ft.) long input power cable stripped at ends
- Dimmable: 0-10Vdc
- Photocell and motion sensors are optional
- Beam Angle: 90°x120° (NEMA 7Hx6V)
- Ultra-durable Powder Coat Paint
- UL/cUL Listed
- IP65
- Warranty: 5 years

**Applications**

- Security
- Signs
- Building Facades
- Displays



**Mounting Options**

- Slip Fitter (XLE-SF), accessory, can be used to attach fixture to a 2 3/4" OD tenon (2-inch pipe).
- A mount arm (XLE-ARM), accessory, can be used to attach fixture on a square pole. Consider XALE Series Area Light Fixtures.

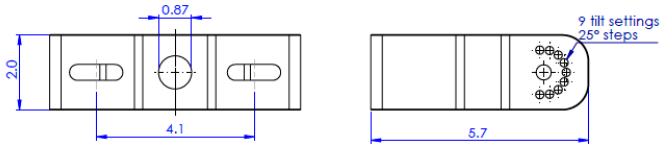


**Ordering Information**

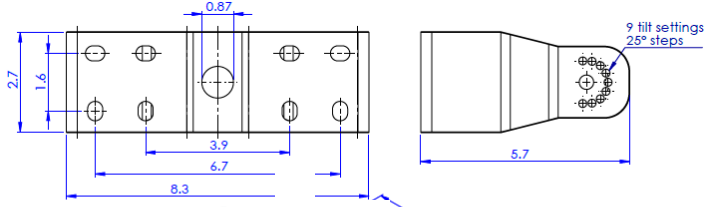
Model Name	Color Temp (CCT)	Input Power (W)	Delivered Lumens	Input Voltage	Driver	Light Distribution	Housing Color	Comparable to HID	DLC ID
<b>XFLE-4100-MV-TR-F1-T</b>	4000	97	13,494	120-277V	Towin	NEMA 7Hx6V	Bronze	320W	PLABQ0V08HSN
<b>XFLE-5100-MV-TR-F1-T</b>	5000	97	13,494	120-277V	Towin	NEMA 7Hx6V	Bronze	320W	PLME16XFNQ6L
<b>XFLE-4150-MV-TR-F1-T</b>	4000	150	20,680	120-277V	Towin	NEMA 7Hx6V	Bronze	400W	PLNF7FVEH42R
<b>XFLE-5150-MV-TR-F1-T</b>	5000	150	20,680	120-277V	Towin	NEMA 7Hx6V	Bronze	400W	PL0M20SO1Q3J
<b>XFLE-4230-MV-TR-F1-I</b>	4000	227	31,312	120-277V	Inventronics	NEMA 7Hx6V	Bronze	750W	PLHMXSFULK7A
<b>XFLE-5230-MV-TR-F1-I</b>	5000	227	31,312	120-277V	Inventronics	NEMA 7Hx6V	Bronze	750W	PLVYNPFTCBQ4
<b>XFLE-5230-HV-TR-F1-M</b>	5000	235	32,456	277-480V	Meanwell	NEMA 7Hx6V	Bronze	750W	PLSRUMRK2O6X
<b>XFLE-4300-MV-TR-F1-I</b>	4000	293	40,718	120-277V	Inventronics	NEMA 7Hx6V	Bronze	1000W	PL2XAWZZJ18
<b>XFLE-5300-MV-TR-F1-I</b>	5000	293	40,718	120-277V	Inventronics	NEMA 7Hx6V	Bronze	1000W	PL418IM2X8GC
<b>XFLE-4300-HV-TR-F1-M</b>	4000	302	41,902	277-480V	Meanwell	NEMA 7Hx6V	Bronze	1000W	PL8JB1X0KKRU
<b>XFLE-5300-HV-TR-F1-M</b>	5000	302	41,902	277-480V	Meanwell	NEMA 7Hx6V	Bronze	1000W	PLUAAIMBYFHD

**Mounting Details** (inches):

For 100, 150, & 230W luminaires

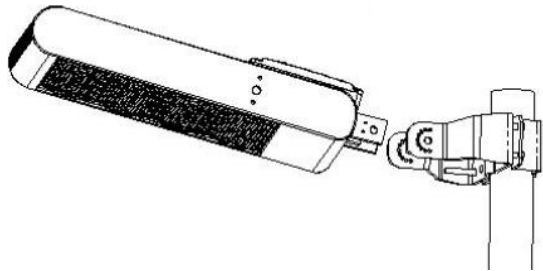


For 300W luminaire



**Accessories**

Mounting on round poles (works with Trunion only)



For 100, 150, & 230W models



**XLE-TR-RPM**

Round Pole Mount  
Fits 2" - 4.3" diameter pole

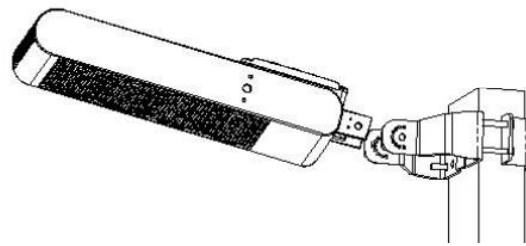
For 300W model F



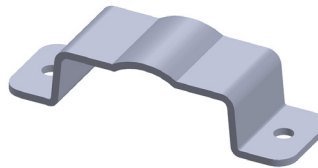
**XLE-TR-RPML**

Round Pole Mount Large  
Fits 2" - 4.7" diameter pole

Mounting on square poles (works with Trunion only)



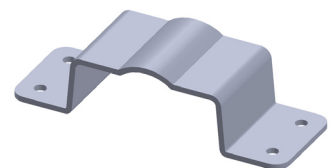
or 100, 150, & 230W models



**XLE-TR-SPM**

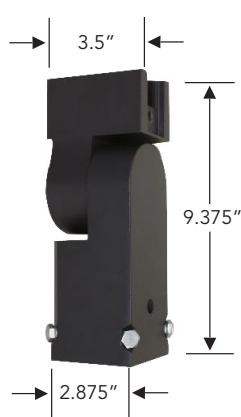
Square Pole Mount  
Fits 2" - 3.5" square pole

For 300W model



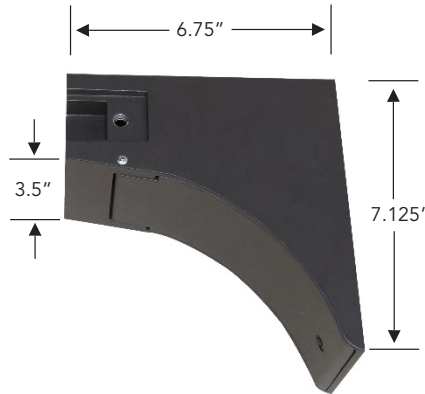
**XLE-TR-SPML**

Square Pole Mount Large  
Fits 2" - 3.9" square pole

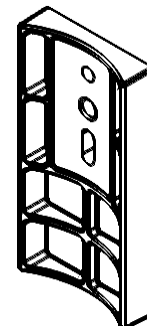


**XLE-SF:** Slip Fitter

Fits up to 2.375" OD tenon (2-inch pipe)



**XLE-ARM:** Mount Arm



**XAL-RPA:** Round Pole Adapter  
(Fits up to 5" diameter pipes).

Compatible with XLE-ARM accessory only

**Dimensions**

Model	Length (in)	Width (in)	Height (in)	Trunnion (in)	Effective Projected Area EPA (sf)	Weight (lbs)
XFLE-100	11	12 $\frac{5}{8}$	3 $\frac{3}{8}$	Length: 5.7 Depth: 6.6 Height: 2.0	1.92	14.0
XFLE-150						
XFLE-230	14 $\frac{1}{8}$		3 $\frac{1}{2}$	Length: 5.7 Depth: 8.3 Height: 2.7	2.33	18.0
XFLE-300	18 $\frac{1}{2}$				2.96	24.5

