

## LED Area Light

### XALE Series

#### Features

- LED: Lumileds
- Color Rendering Index (CRI): > 70
- Long LED life; L<sub>70</sub> > 150,000 hours. L<sub>70</sub> hours are IES TM-21-11 calculated hours.
- Rated for Ambient Temperatures between -40°C/-40°F to 40°C/104°F
- Power Factor (PF) > 0.9
- Total Harmonic Distribution (THD) < 20%
- Surge protection: 6kV
- Fixtures include approx. 1 m (3.3 ft.) long input power cable stripped at ends
- Dimmable: 0-10Vdc
- Ultra-durable Powder Coat Paint
- UL/cUL Listed
- IP65
- Warranty: 5 years

#### Mounting Options

- 6.5" long mounting arm is included with the fixture for square pole mounting
- Slip Fitter (XLE-SF), accessory, can be used to attach fixture to a 2 $\frac{3}{8}$ " OD tenon, (2-inch pipe).
- A round pole adapter (XAL-RPA), accessory, can be used to mount this fixture on round poles, up to 5" diameter.

Project:	
Catalog#:	
Approved by:	

#### Applications

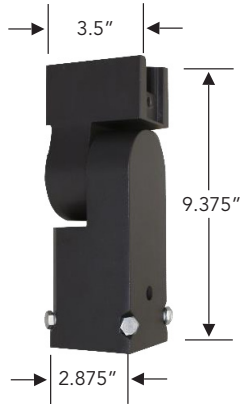
- Security
- Warehouses
- Parks
- Outdoor Lighting
- Parking Lots
- Hotels
- Street Lights



#### Ordering Information

Model Name	Color Temp (CCT)	Input Power (W)	Delivered Lumens	Input Voltage	Driver	Light Distribution	Housing Color	Comparable to HID	DLC ID
<b>XALE-4100-MV-T3-T</b>	4000	97	13,475	120-277V	Towin	Type 3	Bronze	320W	PL02GDM6E8FK
<b>XALE-5100-MV-T3-T</b>	5000	97	13,475	120-277V	Towin	Type 3	Bronze	320W	PLUC05ZMFZ30
<b>XALE-4150-HV-T3-M</b>	4000	155	21,618	277-480V	Meanwell	Type 3	Bronze	400W	PLVX9CAI63GU
<b>XALE-4150-MV-T3-T</b>	4000	150	20,680	120-277V	Towin	Type 3	Bronze	400W	PLSJ6QQFI6WV
<b>XALE-5150-MV-T3-T</b>	5000	150	20,680	120-277V	Towin	Type 3	Bronze	400W	PLUMW1VZLNLP
<b>XALE-5150-MV-T4-T-BK</b>	5000	150	20,680	120-277V	Towin	Type 4	Black	400W	-
<b>XALE-5150-MV-T4-T-WH</b>	5000	150	20,680	120-277V	Towin	Type 4	White	400W	-
<b>XALE-4230-MV-T3-I</b>	4000	227	31,312	120-277V	Inventronics	Type 3	Bronze	750W	PLYH69IAW15M
<b>XALE-5230-MV-T3-I</b>	5000	227	31,312	120-277V	Inventronics	Type 3	Bronze	750W	PLYHP0WAI258
<b>XALE-4300-HV-T3-M</b>	4000	302	41,902	277-480V	Meanwell	Type 3	Bronze	1000W	PLRFKPOS7CP
<b>XALE-4300-MV-T3-I</b>	4000	293	40,718	120-277V	Inventronics	Type 3	Bronze	1000W	PLF9A9ZZE1AI
<b>XALE-4300-MV-T4-I</b>	4000	293	40,718	120-277V	Inventronics	Type 4	Bronze	1000W	-
<b>XALE-5300-MV-T3-I</b>	5000	293	40,718	120-277V	Inventronics	Type 3	Bronze	1000W	PL00MT1VJJAV

**Accessories**



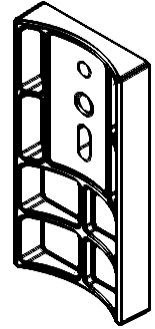
**XLE-SF:** Slip Fitter  
Fits up to 2.375" OD tenon (2-inch pipe)



**XLE-TR:** Trunion (100/150/230W models)



**XLE-TRL:** Trunion (300W model)



**XAL-RPA:** Round Pole Adapter  
(Fits up to 5" diameter pipes)

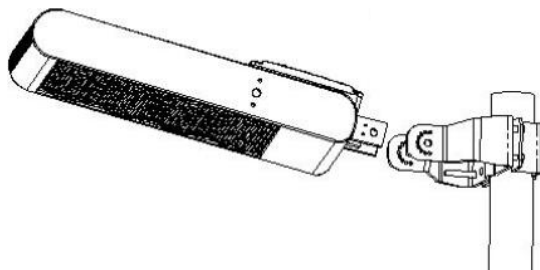
**Mounting Hole Guide**

<u>XALE with standard ARM attachment</u>	<u>Trunion Details</u>	
	<u>For 100, 150, &amp; 230W w/ trunion (XLE-TR)</u>	<u>For 300W w/ trunion (XLE-TRL)</u>

**Accessories that work with Trunion Only**

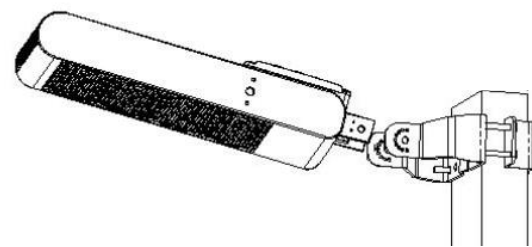
Mounting on round poles (works with Trunion only)

Mounting on square poles (works with Trunion only)



For 100, 150, & 230W models

For 300W model F



or 100, 150, & 230W models

For 300W model



**XLE-TR-RPM**

Round Pole Mount

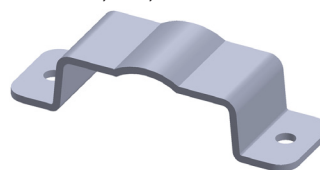
Fits 2" - 4.3" diameter pole



**XLE-TR-RPML**

Round Pole Mount Large

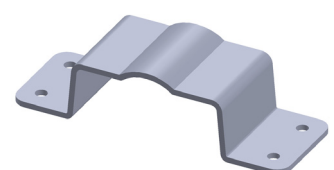
Fits 2" - 4.7" diameter pole



**XLE-TR-SPM**

Square Pole Mount

Fits 2" - 3.5" square pole



**XLE-TR-SPML**

Square Pole Mount Large

Fits 2" - 3.9" square pole

**Dimensions**

Model	Length (in)	Width (in)	Height (in)	Mounting Arm (in)	Effective Projected Area EPA (sf)	Weight (lbs)
XALE-100	11	12 $\frac{5}{8}$	3 $\frac{3}{8}$	Length: 6 $\frac{1}{2}$	2.25	14.5
XALE-150						
XALE-230	14 $\frac{1}{8}$			Height: 7	3 $\frac{1}{2}$	2.67
XALE-300	18 $\frac{1}{2}$	3.29	25			

