

### LED Area Light XAL Series

Project:	
Catalog#:	
Approved by:	

#### Features

- LED: Lumileds
- Color Temperature: 5000K (cool white)
- Color Rendering Index (CRI): > 80
- Long LED life; L70 > 60,000 hours
- Rated for Ambient Temperatures up to 40°C/104°F
- Power Factor (PF) > 0.9
- Total Harmonic Distribution (THD) < 20%
- Input Voltage: 120 – 277V; 50/60 Hz
- Dimmable: 0-10Vdc (XAL-5080 is not dimmable)
- Distribution: Type III
- Ultra-durable Powder Coat Paint
- Standard Color Bronze
- 6" long mounting arm pre-installed for square pole mounting
- UL/cUL Listed
- IP65
- Warranty: 5 years

#### Applications

- Security
- Outdoor Lighting
- Warehouses
- Parking Lots
- Street Lights
- Hotels
- Parks



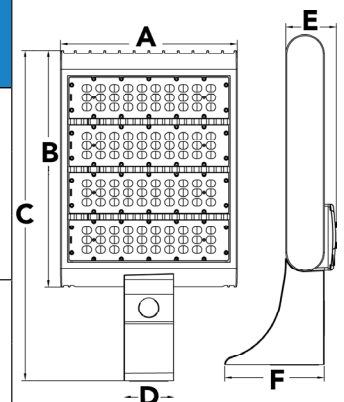
Visit [www.designlights.org](http://www.designlights.org)  
for the Qualified Products List



Model	XAL-5080-LED-MV	XAL-5100-LED-MV	XAL-5150-LED-MV	XAL-5220-LED-MV	XAL-5300-LED-MV
Lumens (Lm)	8,200	10,000	15,000	21,000	30,000
Input Wattage (W)	80	100	150	220	300
Efficacy (Lm/W)	102	100	100	95	100
Comparable to HID	200W	320W	400W	750W	1000W

#### Dimensions

Model	A	B	C	D	E	F	Effective Projected Area (sf)	Weight
XAL-5080	12 $\frac{5}{8}$	9 $\frac{7}{8}$	16 $\frac{1}{2}$	3 $\frac{5}{8}$	3 $\frac{7}{16}$	7 $\frac{1}{8}$	Top 1.24 Side 0.50 Front 0.49	12.8 lbs
XAL-5100								
XAL-5150								
XAL-5220	12 $\frac{5}{8}$	17	23 $\frac{5}{8}$	3 $\frac{5}{8}$	3 $\frac{5}{8}$	7 $\frac{1}{8}$	Top 1.99 Side 0.66 Front 0.51	25.0 lbs
XAL-5300								



All dimensions in inches

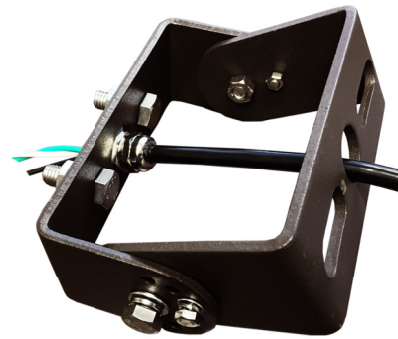
**LED Area Light**  
XAL Series

Project:	
Catalog#:	
Approved by:	

**Accessories** (Sold separately, fixture comes with straight mounting arm for square poles)



**XAL-SF:** Slip Fitter



**XAL-TR:** Trunnion/Mini Yoke Mount

**Photometrics**

